



# Controllers



## Controller+Pump

### MegaTron

Multi-Function / Multi-System  
uS, pH, ORP, Free Chlorine,  
Bio Fouling and Timers

### MegaTron SS

Multi-Function / Single System  
uS, pH, ORP, Free Chlorine,  
Bio Fouling and Timers

### NanoTron

Dual-Timers / Compact Size  
Pulse, 28-Day, and Recycle  
uS, and Corrosion

### Series R

Controller / Pump Combo  
Pump specs and options below

# Pumps



### Series A

LCD Display w/ Timers

### Series B

Stroke Length and Speed

### Series C

Stroke Length Only

### Series G

Speed Only

• Pumps from 2-45GPD and 0-250PSI

• Seat Material: Viton, Hypalon, and Teflon

• Liquid Ends: Kynar and SS

# Accessories



• Handheld Testers

• Flow Trackers

• Pre-fabs

• Motorized Ball Valves

• Glycol Tanks and Feeders

• Blowdown Valves

• Water Meters and more...

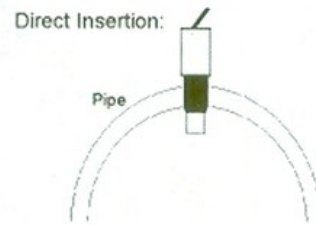
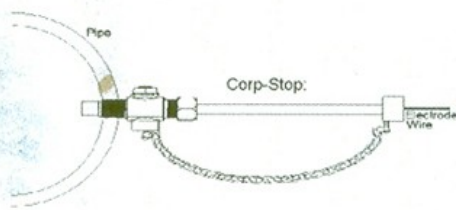
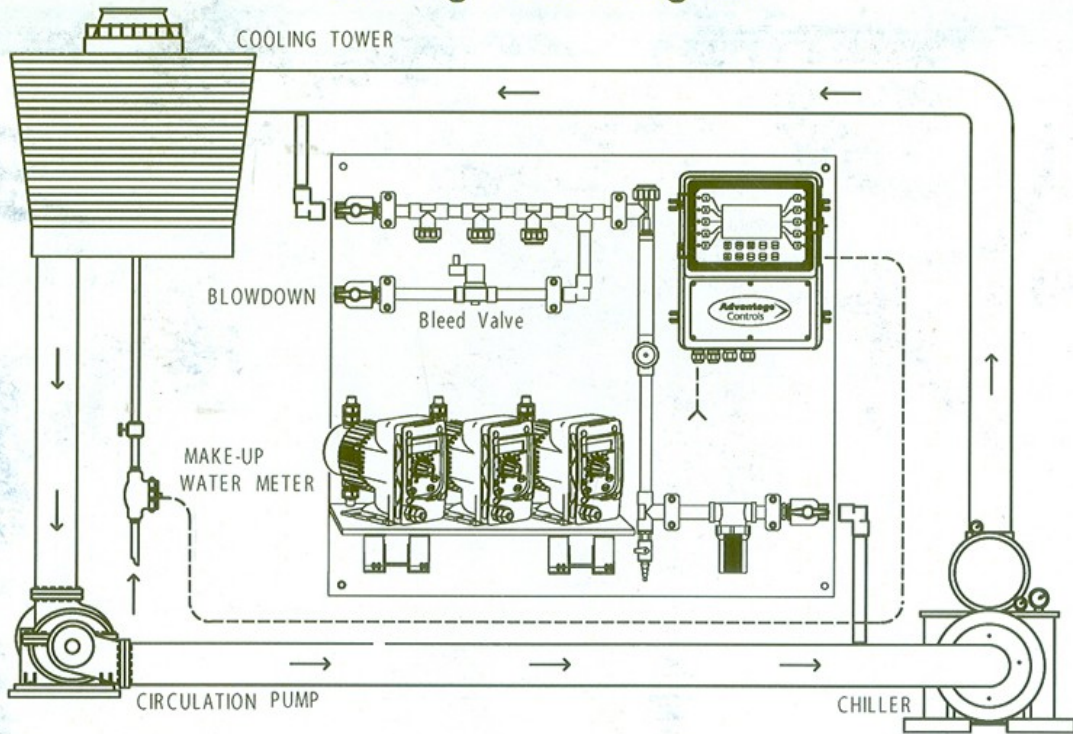
[www.advantagecontrols.com](http://www.advantagecontrols.com)



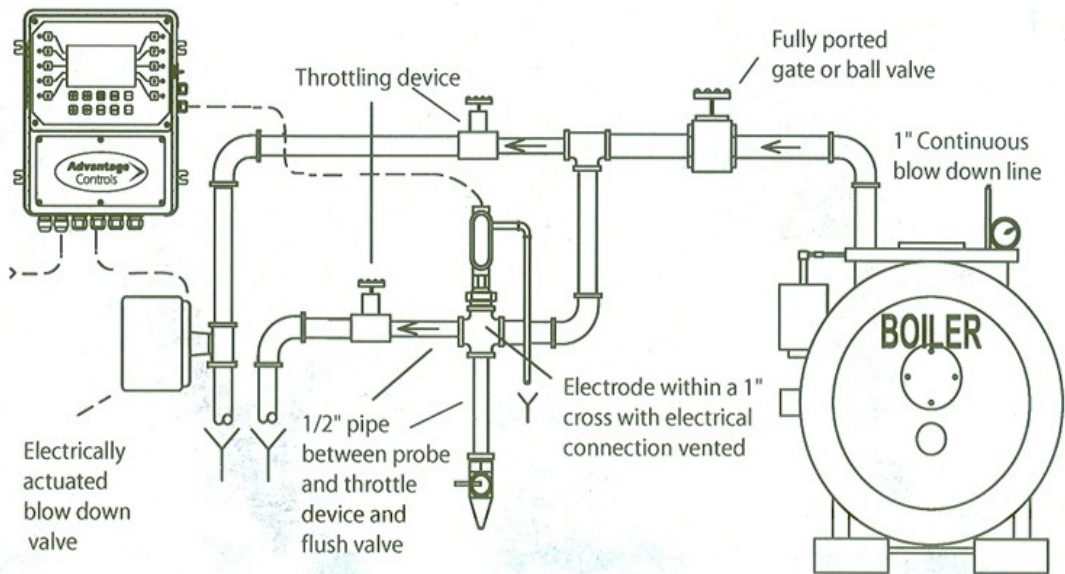
Award Winning  
Products & Service



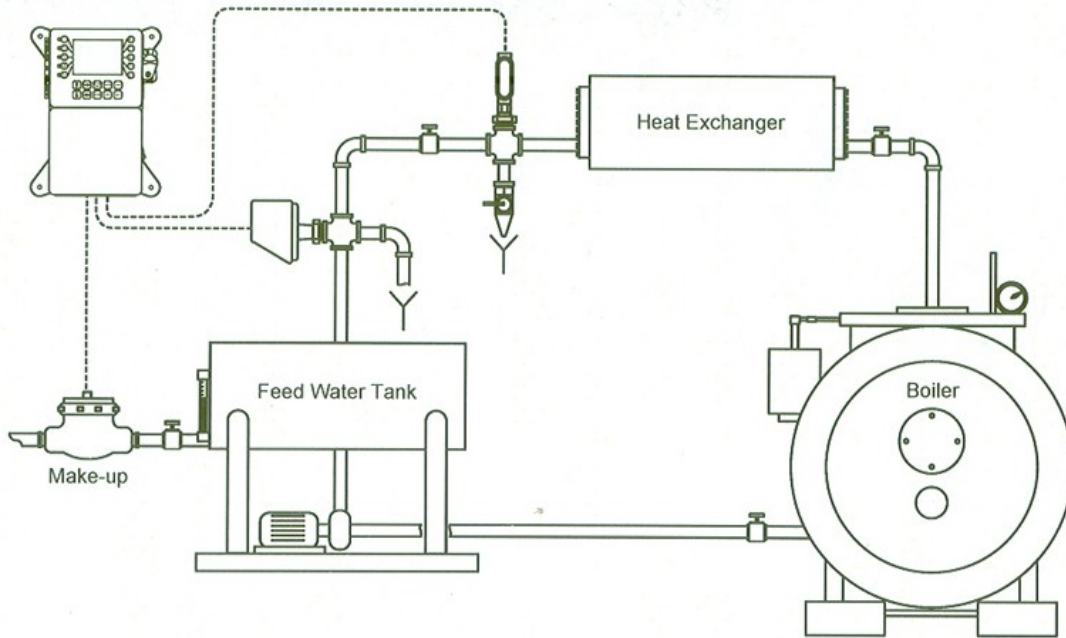
## Cooling Tower Diagram



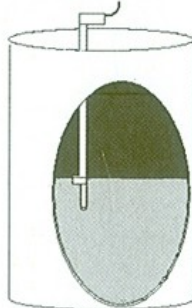
## Continuous Sampling Boiler Diagram



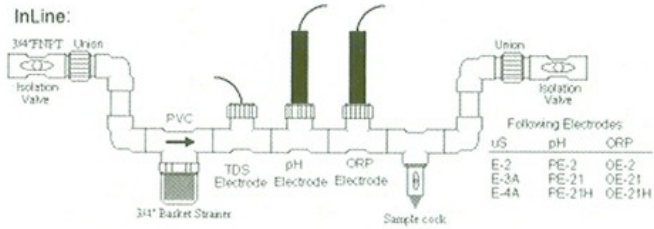
## Condensate Loop Boiler Diagram



Tank Mounted:



InLine:



## Timed Sampling and Sample and Hold Boiler Diagram

